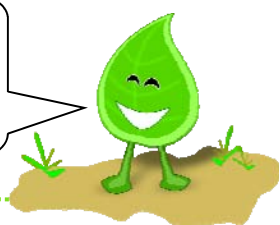


ARTiGO A2000 Barebone Storage PC System

Hello! I'm Mr. Green. I'm here to give you a tour of the ARTiGO A2000.



Before we start, you need to be aware of some Safety Precautions. Ok?

1. Unplug the power cord before installation. Installing modules to the system with the power on can do damage to the ARTiGO A2000 as well as physical harm to the person performing the installation.
2. When handling the motherboard, avoid touching any metal leads or connectors.
3. Use a grounded wrist strap before handling any computer modules.
4. Keep modules in antistatic containers until they are to be installed.
5. Do not remove the stickers on the motherboard and devices. These stickers are required for warranty validation.
6. Avoid dropping screws or other metal objects on the motherboard and other modules.
7. Do not place the system on uneven surfaces.
8. If you are unfamiliar with the installation process or have a technical problem with the product, consult a certified computer technician.

Pssst...I got a tip for you... All you need is a Philips screwdriver.

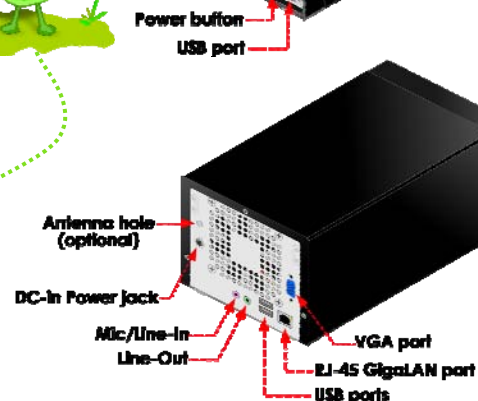


Here's some background information about the ARTiGO A2000.

Processor	VIA C7-D 1.5GHz NanoBGA2 Processor / 400MHz FSB
Chipset	VIA VX800 Advanced All-in-one system processor
System Memory	DDR2 667/566/400 Memory up to 2GB (SODIMM)
LAN	VIA VT6130 PCI Express Gigabit Ethernet Controller
Audio	VIA VT1708B High Definition Audio Codec
I/O	2 x SATA II 3.5-inch HDD Expansion Bay Bootable built-in CF socket Audio ports (Line-Out and Mic/Line-In) RJ-45 GigaLAN port 3 x USB 2.0 ports VGA port DC-in power jack (DC 12V) 802.11b/g WiFi (optional)
System Features	System Monitoring Utility and Security Suites
Operating Temp.	0 ~ 45°C
Dimension	259.3mm x 135.4mm x 115.6mm (L x W x H)

ARTiGO A2000 specifications are subject to change without prior notice.

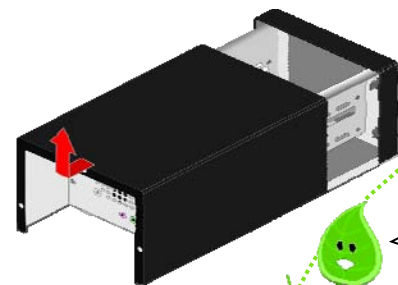
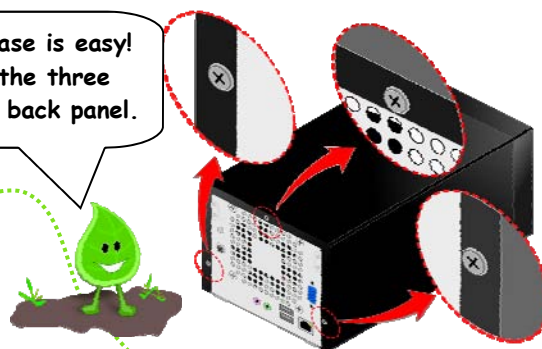
Ok, let's get started! The front panel has a power button and there is a convenient USB port too!



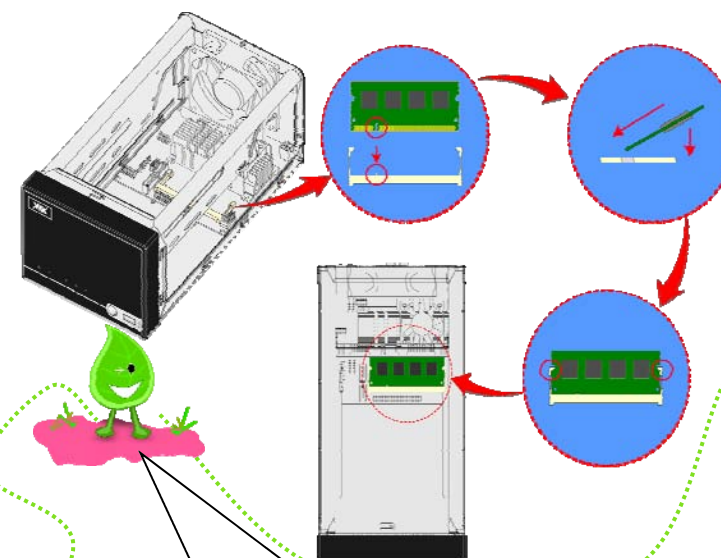
The back side of the system has a bunch of useful things like a VGA port, LAN port, audio ports, 2 USB ports, and of course a DC-In power jack!



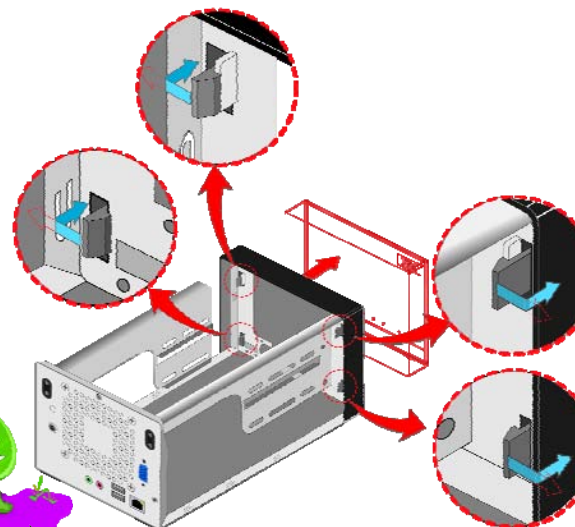
Opening the case is easy! Just unscrew the three screws on the back panel.



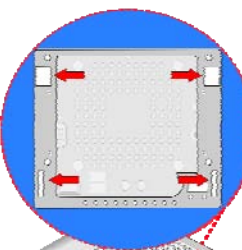
Then gently slide the top cover backward and lift it away from the chassis.



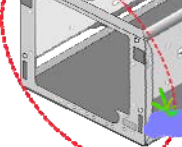
Installing memory is a snap! Just align the notch on the SODIMM with the memory slot. Then insert it at a 45 degree angle and push the SODIMM down until it locks in place.



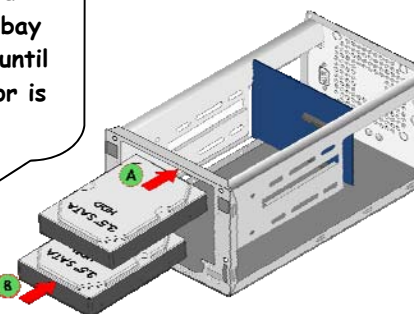
Press the tabs on their respective direction (left or right) to release from the hook and then push the tabs forward to release the front cover.



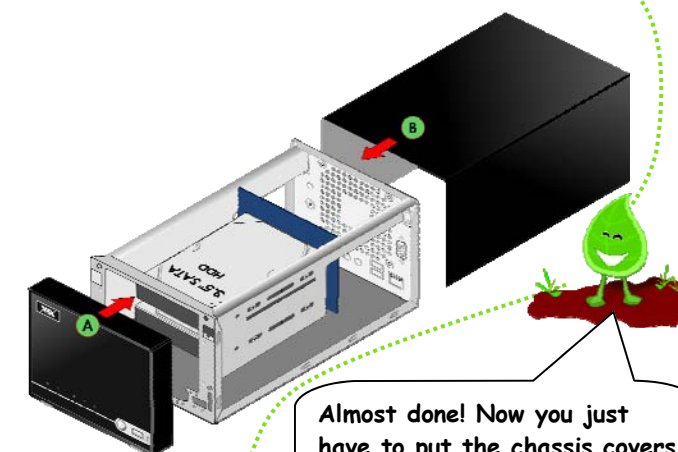
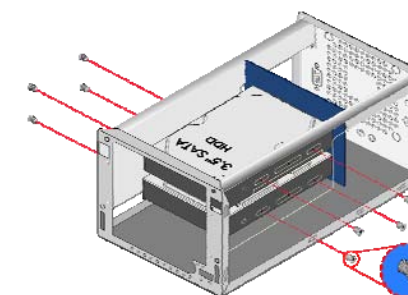
The front cover is attached to the chassis with four tabs that fit into four matching slots (see the picture?) located at the top and bottom of the front part of the chassis.



Installing hard disks is easy! Slide the hard disk into the HDD bay and gently push it until the SATA connector is fully inserted.



Once the hard disks are connected, remember to secure them with the hard disk screws.



Almost done! Now you just have to put the chassis covers back properly! Remember to fasten the screws. Ok?



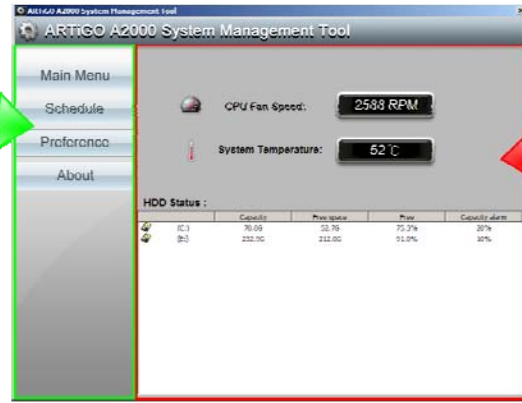
Here are some important things to remember! On to the software!



1. It's best to only use the screws provided in the ARTiGO A2000 package kit.
2. For more information regarding the mainboard, please check to <http://a2000.viatech.com>

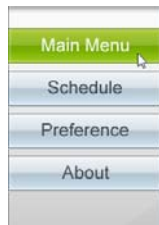
ARTiGO A2000 Barebone Storage PC System

Navigation buttons

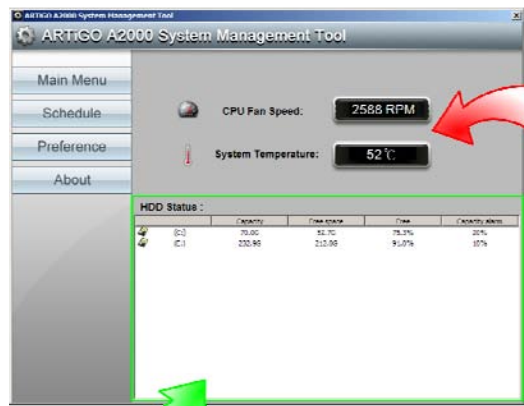


Main window

The content in the main window changes according to the navigation buttons.



When the cursor hovers above any of the navigation buttons, the active button will be highlighted with green – like me!

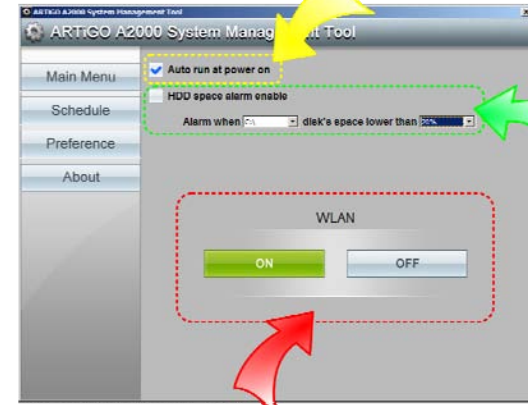


Installed hard disks

The upper half of the main window shows real-time system monitoring data. The lower half shows information about all attached hard disks.

System monitoring

Auto-launch setting



WLAN controller setting

Pssst...checking the "auto run" feature will cause the software to start when the OS starts.

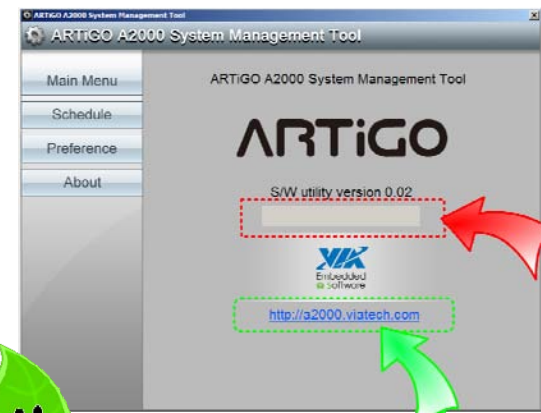
You can also take advantage of the handy low capacity alarm so you'll always know when you need to clean up your hard drives.

Plus there's an easy to use control to turn the WLAN controller on and off!

Alarm setting

This menu shows you what BIOS version and software version you are using, and provides you a link to the product website – to make it convenient for you to update.

Well, that ends our quick tour. Have fun with your ARTiGO A2000 – and don't do anything I wouldn't do!

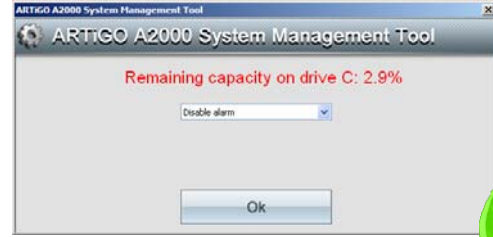


BIOS version

Links to website



Setting up the time for each scheduling rule is simple with this easy to use interface!

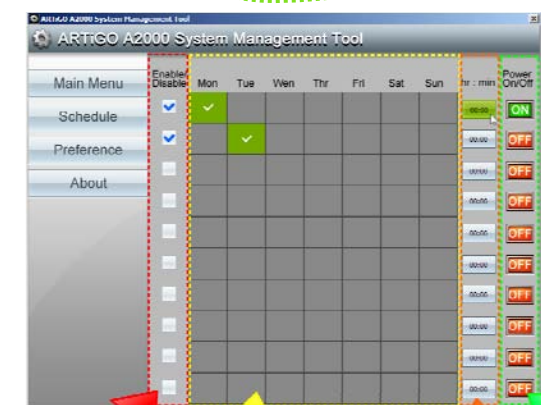


When the low capacity alarm triggers, a window like this will pop up. You can then decide to disable the alarm or reset it for a lower tolerance.



Scheduling is a snap! With a few easy clicks, you can schedule your ARTiGO A2000 to power on* and off.

You can create up to 10 rules and toggle them so you don't have to recreate the rules each time.



Toggle on/off

Day of the week

Time (24 hr format)

Desired operation

* The power on feature will be supported in a future update of the System Management Tool.